

Fetal Pig Surgery

Student Answer Sheet

Surgical Team # _____

Dr. _____

Dr. _____

Dr. _____

Dr. _____

Pre Surgery Briefing



What's pink on the inside and transparent on the outside? _____

1. Matching:

- | | |
|--------------------------|-------------|
| _____ along the backbone | A. Proximal |
| _____ the nose | B. Ventral |
| _____ umbilical cord | C. Anterior |
| _____ close to the body | D. Dorsal |

2. Matching:

- | | |
|-----------------------|--|
| _____ heart | A. cleans and filters blood |
| _____ pancreas | B. the voice box |
| _____ liver | C. allows exchange of gases in the blood |
| _____ kidney | D. produces insulin |
| _____ trachea | E. produces bile to digest fats |
| _____ urinary bladder | F. the windpipe |
| _____ lungs | G. stores the liquid waste (urine) |
| _____ larynx | H. pumps blood to all parts of body |

- | | |
|----------|-----------------------|
| 3. _____ | 7. _____ |
| 4. _____ | 8. _____ |
| 5. _____ | 9. _____ |
| 6. _____ | 10. Ventral / Lateral |

- | | |
|------------------|--------------|
| 11. Part A _____ | Part B _____ |
| Part C _____ | Part D _____ |
| 12. Part E _____ | Part F _____ |
| Part G _____ | Part H _____ |

13. Matching: (write A, T or C)

- | | |
|-----------------|--|
| _____ Picture A | A Abdominal Cavity |
| _____ Picture B | |
| _____ Picture C | T Thoracic Cavity |
| _____ Picture D | |
| _____ Picture E | |
| _____ Picture F | C Cranial Cavity (brain and spinal cord) |

14. Match

- | | | |
|-----------------|-----------------|-----------------|
| _____ picture 1 | _____ picture 4 | _____ picture 7 |
| _____ picture 2 | _____ picture 5 | |
| _____ picture 3 | _____ picture 6 | |

- | | |
|-----------------------|------------------------|
| A. Digestive System | F. Reproductive System |
| B. Circulatory System | G. Urinary System |
| C. Respiratory System | |
| D. Endocrine System | |
| E. Nervous System | |

True/False

- | | | | | | |
|-----------|-----------|-----------|-----------|-----------|-----------|
| 15. _____ | 16. _____ | 17. _____ | 18. _____ | 19. _____ | 20. _____ |
| 21. _____ | 22. _____ | 23. _____ | 24. _____ | 25. _____ | 26. _____ |

27. How do you take a sick pig to the hospital?

28. What do you call a pig with no legs?

29. Where do bad pigs go?

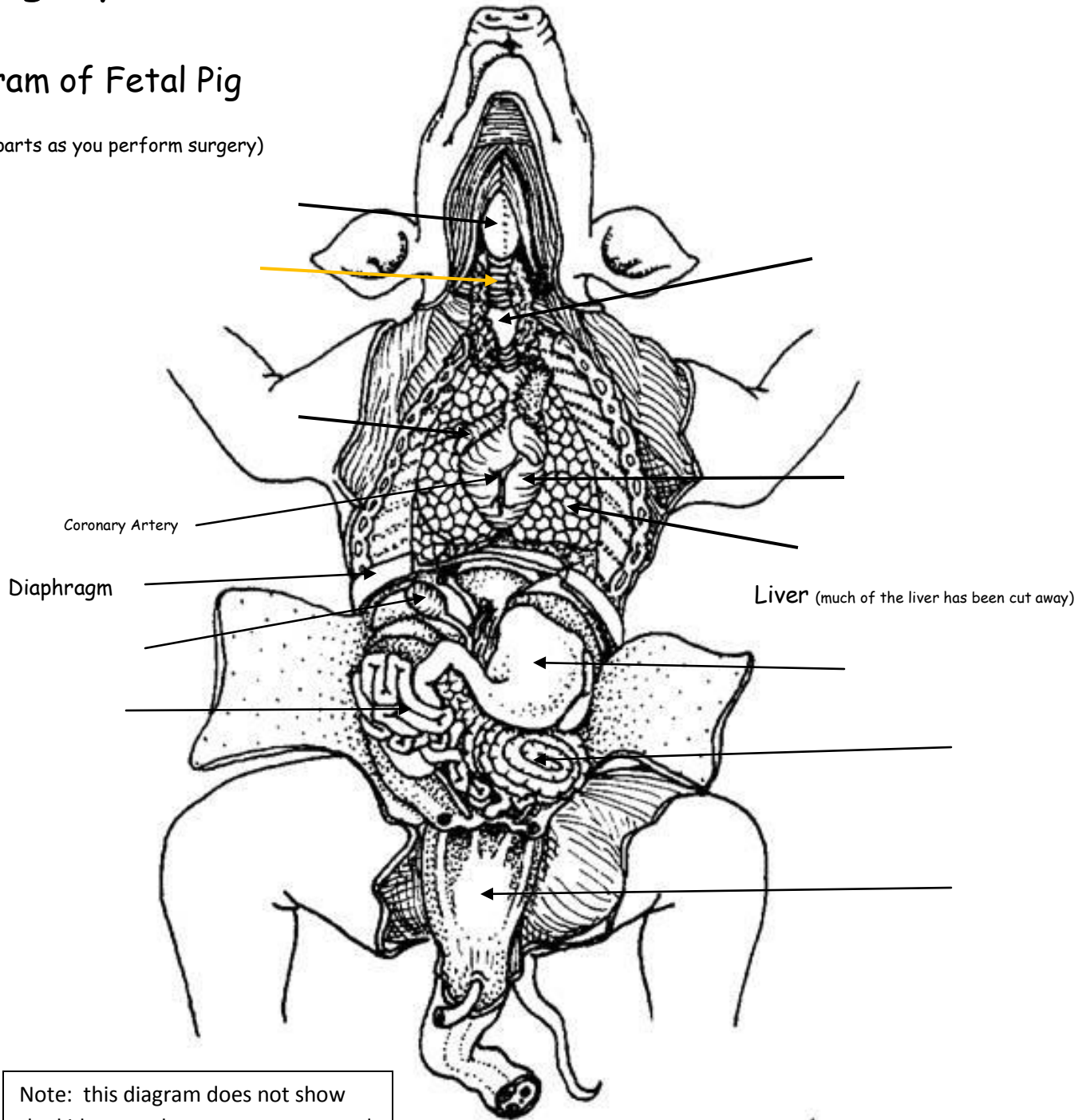
30. How do pigs write top secret messages?

31. In our music video, what city does our piggy decide to go live in?

Surgery (Day 1 and Day 2)

Diagram of Fetal Pig

(Label the parts as you perform surgery)



Note: this diagram does not show the kidneys, spleen, or pancreas, and much of the liver has been removed.

July/03
© BIODIDAC, Livingstone

